



SPECIALTY TOP CO.

INSTALLATION INSTRUCTIONS JEEP® SCRAMBLER TONNEAU PART #108-081

Thank you for purchasing Specialty's Tonneau for your Jeep® vehicle. It has been designed for great fit and long wear. Please read and follow, precisely, all installation instructions provided when installing tonneau cover.

TOOLS REQUIRED:

1/2" WRENCH	#2 PHILLIPS SCREWDRIVER
1/8" DRILL BIT	13/64" DRILL BIT
3/8" DRILL BIT	ELECTRIC DRILL
8' TAPE MEASURE	RUBBING ALCOHOL

INSTALLATION TIPS

Before you begin installing this tonneau, here are a few tips to make installation easier.

This tonneau should be installed where the temperature is above 72 degrees Fahrenheit. Below this temperature, the tonneau may contract making it difficult to install.

It is normal for a tonneau to contract and wrinkle when stored in the shipping carton. The tonneau will relax and wrinkles will disappear within a few days of installation as fabric adjusts to shape of mounting hardware.

INSTALLATION PROCEDURES:

On page 3 of this instruction manual there is an assembly drawing. Please refer to it for identification of parts and assembly assistance. Also refer to page 4 to assure that all parts are included in your kit.

1. Belt Rails and Corner Plate:

Check under the body edge for wiring before drilling. Measure 44 1/8" from dash to the top of the body flange to find the starting point. Mark and drill 3/8" hole centered on body edge. This will be where the first mounting hole for the front belt rail (Item 1). Place 5/16" x 3/4" hex bolt (Item 2) through 5/16" flat washer (Item 3), hole in top of body and 5/16-18 rectangular nut (Item 10). Tighten bolt only enough to hold belt rail on. Using front belt rail as a template mark and drill 3/8" hole for rear mounting hole, making sure that belt rail is flush with inside of body edge. Secure to body with 5/16 x 3/4" hex bolt, 5/16" flat washer and 5/16-18 rectangular nut. Butt rear belt rail (Item 5) to front belt rail. Mark and drill three 3/8" holes using belt rail as a template making sure that it remains flush with inside body edge. Secure belt rail to body with 5/16" hex bolt through 5/16 flat washer and 5/16-18 rectangular nut. Drill two 13/64" holes using smaller holes in belt rail as a template. Place 12-24 truss head screws (Item 6) through belt rail and body. Secure with 12-24 hex nut (item 7). Butt the corner plate (Item 8) against the rear belt rail. Mark and drill two 3/8" holes using the oval holes in corner plate as a template. Secure corner plate to body with items 2, 3 and 4. Mark and drill 1/8" holes using corner as a template. Place #10 x 1/2 sheet metal screws (Item 9) through corner plate and tighten. Repeat for other side. See figure 1.

Figure 1

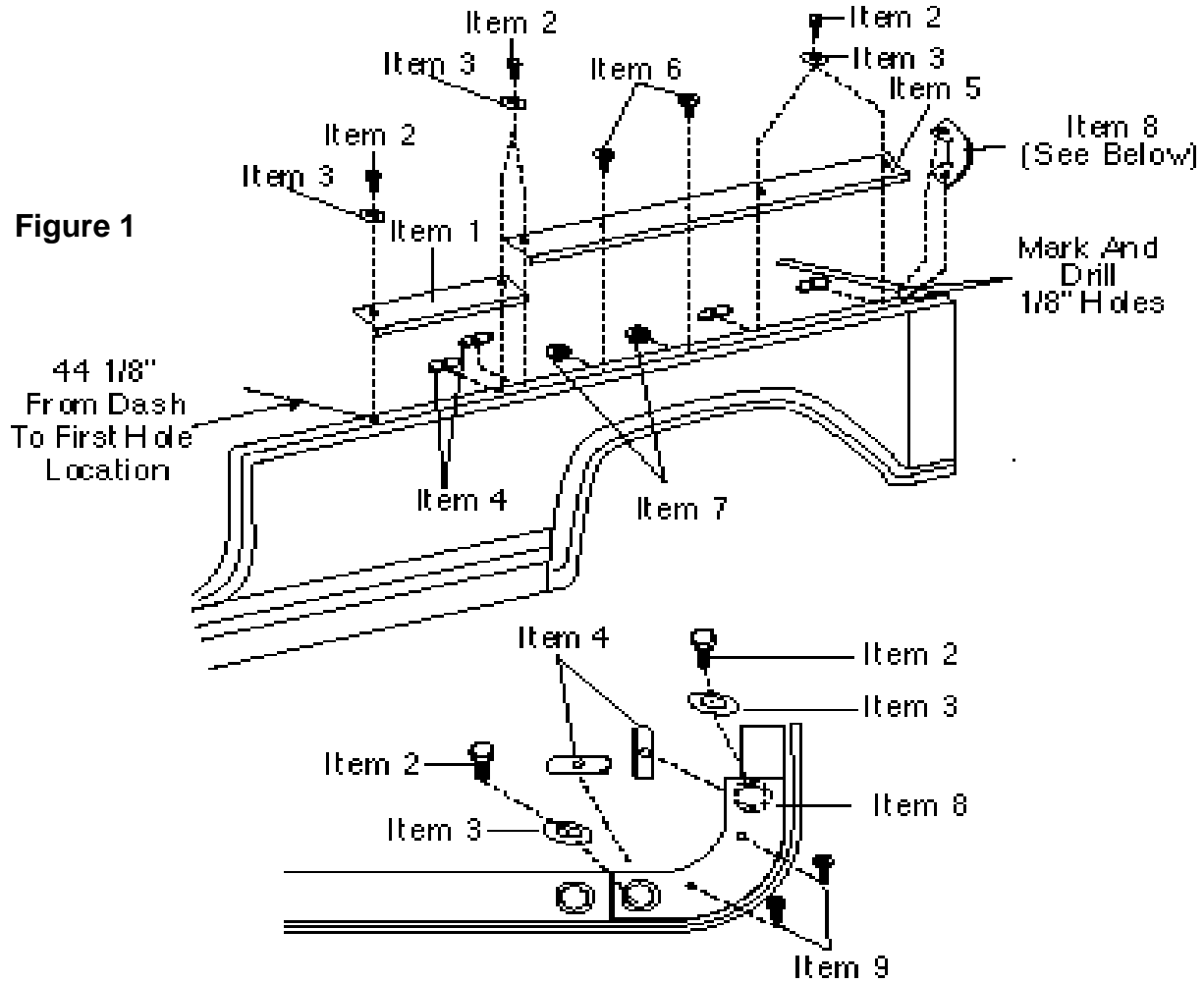
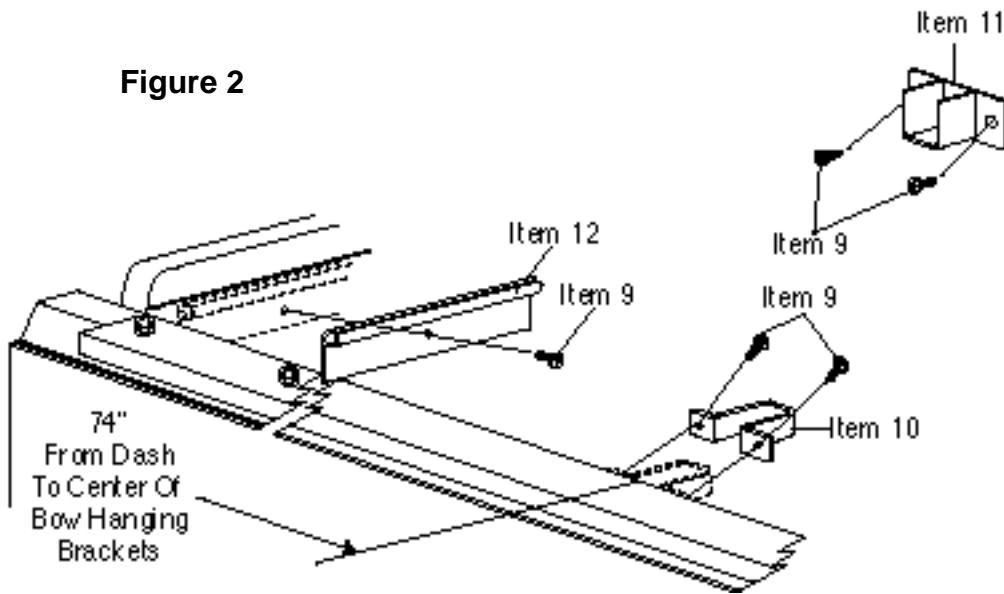
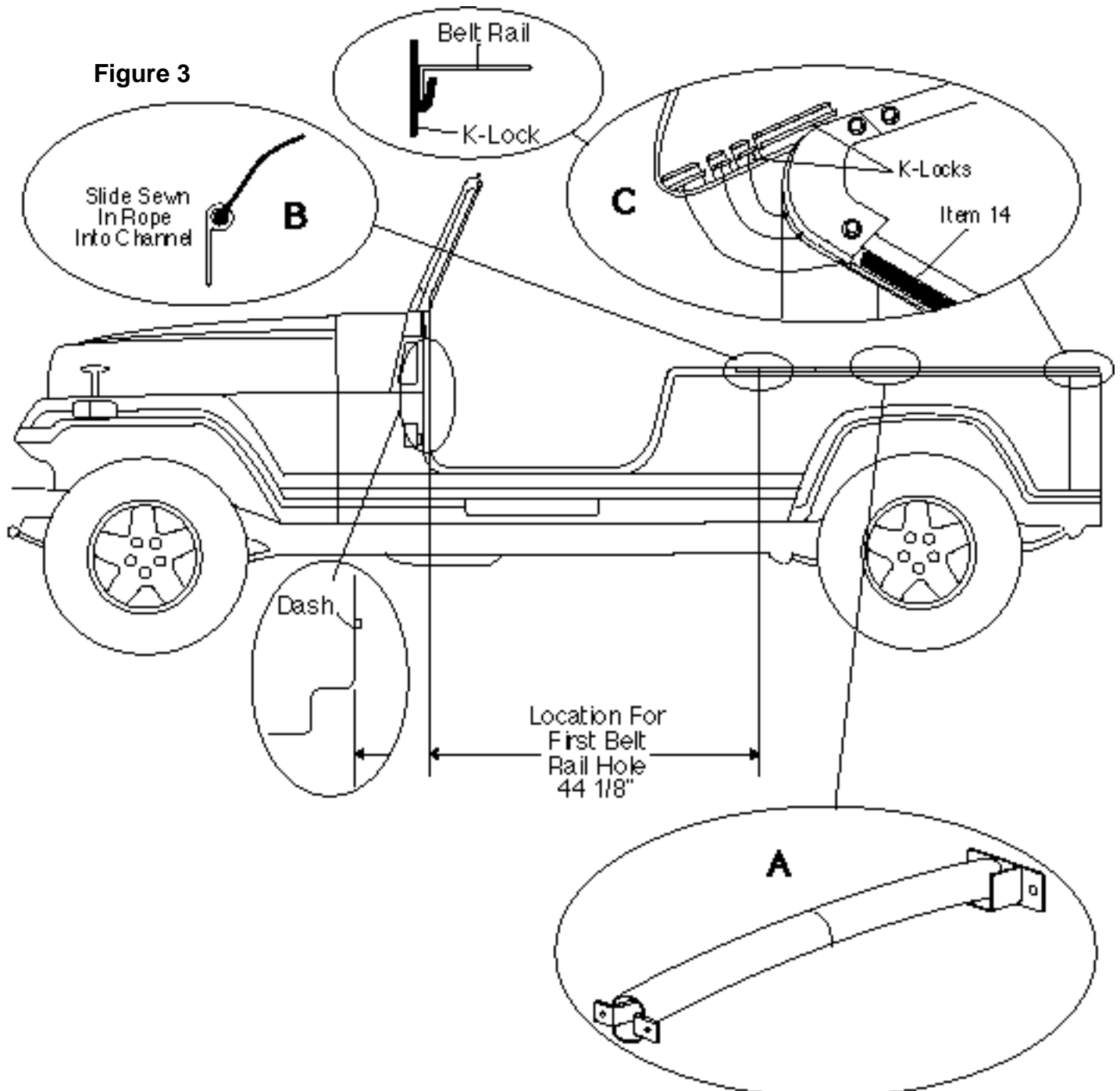


Figure 2



2. Tonneau Channel: Find from left to right to find center line and mark a line on panel behind seats. The two pieces of channel (Item 12) will butt up to one another on this line. Position channel so that the top of channel is even with the top of the body edge. Using the channels as templates, mark and drill 1/8" holes. Secure channels to the panel with #10 x 1/2" sheet metal screws (Item 9). There is a right and left channel. Make sure that you have clearance at the roll bar to drill holes and install the sheet metal screws. See figure 2.

3. Support Bow And Support Bow Brackets: Measure 74" from dash to top of belt rail and mark a line. Center left support bow mount (Item 10) on this line with top of bracket flush with top of body. Mark and drill 1/8" holes using bracket as a template. Secure to body with # 10 X 1/2 " sheet metal screws (Item 9). Follow same procedure for the right support bow bracket (Item 11). Slide bow halves (Item 13) together. Place one open end over left support bracket. Place the other end into right support bracket making sure that arch in bow is up so that it will support tonneau. If arch is down it will allow water to accumulate decreasing life of tonneau. See figure 3-A.



FABRIC INSTALLATION

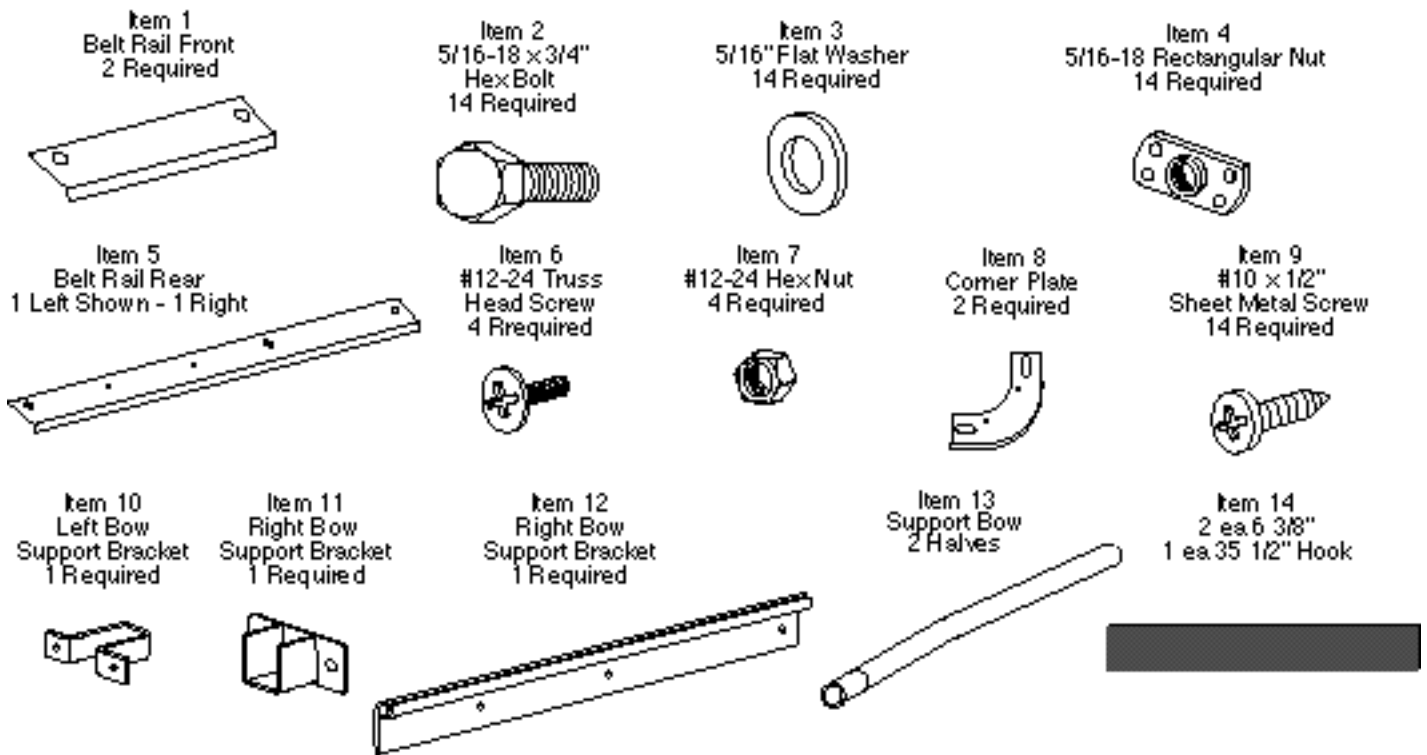
Step 1. Feed sewn in rope (at front of tonneau) into one side of channel, at one side of body, through to the other side of body. See figure 3-B.

Step 2. Pull rear of tonneau to the rear of the body, locating cut outs for roll bar in their respective positions.

Step 3. Starting at the front, clip the K-locks to the belt rails. Pull down and to the rear of the vehicle until all are fully engaged to the belt rails and corner plates. See figure 3-C. The end K-lock,(nearest the tailgate), must be pulled around the corner plate until it fully captivates the end of the corner plate. This prevents the tonneau from slipping around the corner plate resulting in a fit that is not desirable. Press hook and loop together around roll bar cut outs.

Step 4. Clean mounting surface with a 50% water and 50% rubbing alcohol and let dry. Center 35 1/2" piece self adhesive hook (Item 14) on tailgate to match loop sewn at rear of tonneau. Apply the 6 3/8" pieces to slanted edge of body between tailgate opening and corner plates. See figure C.

Parts Identification And Requirements



CARE INSTRUCTIONS

Convertible tops and accessories require special care if you want to get the maximum usage and enjoyment from them. The following recommendations, if followed carefully, can extend the life of your top or accessory.

1. Hand wash using a mild non-detergent soap such as Ivory. Use a nonabrasive cloth or sponge. Rinse thoroughly.
2. **DO NOT** wash in direct sunlight and avoid automatic car washes.
3. When your top is clean, we recommend using "303 Protectant" on both the vinyl top and windows. This product contains a sunscreen that helps protect from the sun's damaging rays. Stay away from products containing alcohol as it will cause the fabric and windows to lose their elasticity, thus reducing the life of your top or accessory. If you are unable to locate "303 Protectant", please call 1-800-223-4303 for a distributor near you.
4. Direct sunlight and heat are the biggest enemies of the windows. Park in the shade whenever possible. If you must park in the sunlight, rotate the direction that you park every few days so all windows get even exposure.
5. Our tops are designed so that you may roll up and/or store the rear curtain and side curtains. To prevent scratching of the windows, be sure that windows are completely clean and free of dust particles. Even a little dirt will badly scratch the windows. You may want to use a soft cloth when rolling up or storing your windows. Heat may build up on rolled up windows, so be sure to unroll them frequently. If you roll up the windows at the beginning of summer and leave them, they may be ruined by fall.
6. **DO NOT** open or roll up windows at temperatures below 45 degrees F. This could cause them to crack or break.
7. **NEVER** use ice scrapers or snow brushes on vinyl windows.

WARRANTY INFORMATION:

Specialty Top Co. manufacturing warrants to the original purchaser of any product it manufactures, that the product will be free of defects in material or workmanship for a period of 90 days from date of purchase. Such obligations under this warranty shall be limited to the **repair or replacement**, at Specialty's discretion, of any assembly or parts which upon examination by Specialty Top Co. proves to be defective. All defective items must be returned with proof of purchase to Specialty Top Co. Manufacturing, 200 East 64th Avenue, Denver, Colorado 80221, freight prepaid. This warranty does not cover damage resulting from abuse, misuse, alteration, accident or damage in transit. Specialty's obligations under this warranty are limited to the aforementioned repair or replacement of warranty defects for which the return authorization has been received during the warranty period, and **SPECIALTY TOP CO. SHALL NOT BE LIABLE FOR ANY INCIDENTAL OR CONSEQUENTIAL DAMAGES ARISING FROM BREACH OF THIS OR ANY IMPLIED WARRANTY.**

Some states do not allow the exclusion or limitation of incidental or consequential damages, so the above limitation or exclusion may not apply to you. This warranty gives you specific legal rights, and you may also have other rights which may vary from state to state.

If you need assistance or further information, you may contact Specialty Top Co. at 1-866-487-9944 between the hours of 8:00 AM and 5:00 PM, Monday through Friday, Mountain Standard Time.